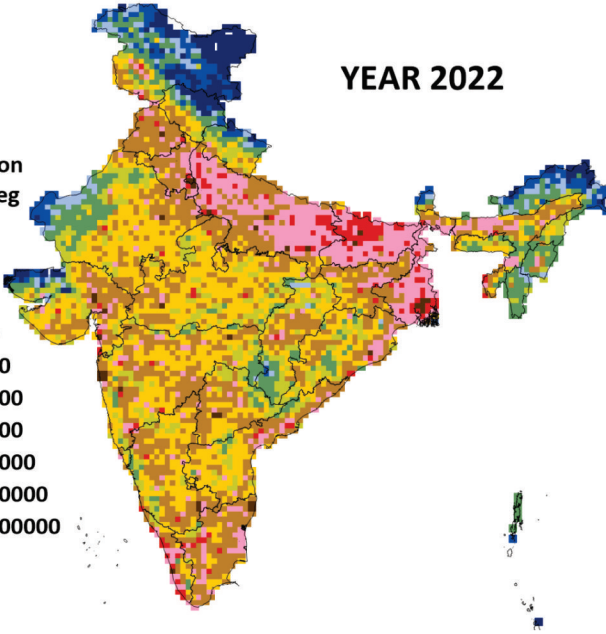
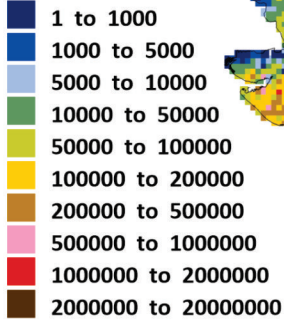


लोकसंख्या

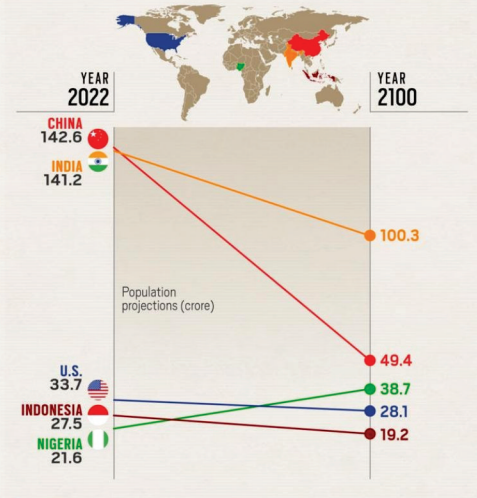
YEAR 2022

Gridded Population
Grid size - 0.25 deg



INDIA'S POPULATION MAY SHRINK BY 41 CRORE IN NEXT 78 YEARS

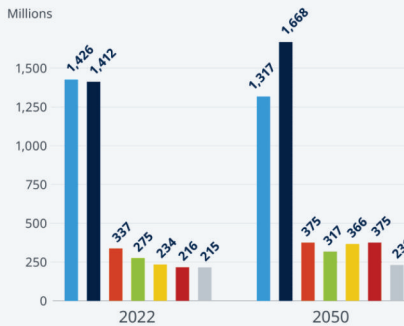
WORLD POPULATION PROJECTED TO FALL FROM 794 CRORE TO 704 CRORE



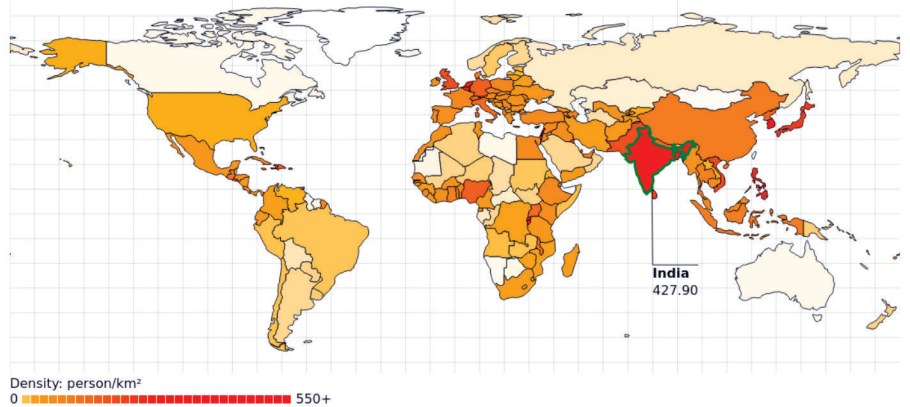
World's most populous countries

India projected to surpass China in 2023

China India US Indonesia Pakistan Nigeria Brazil



2022
Population Density
India
427.90 person/km²

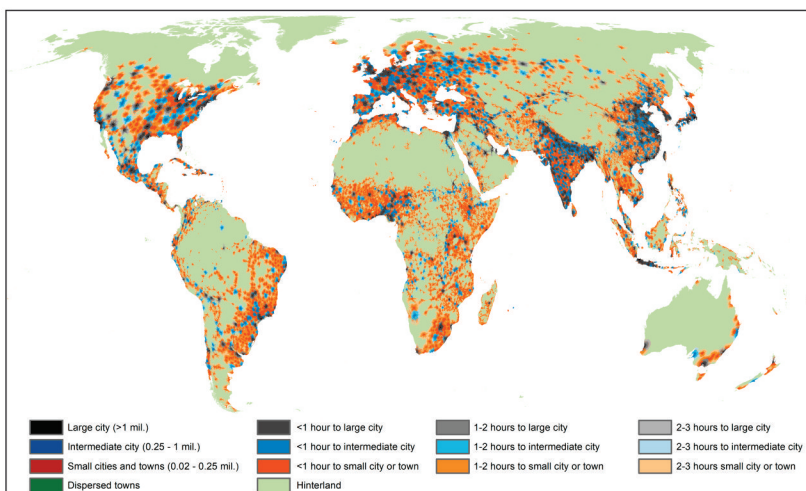
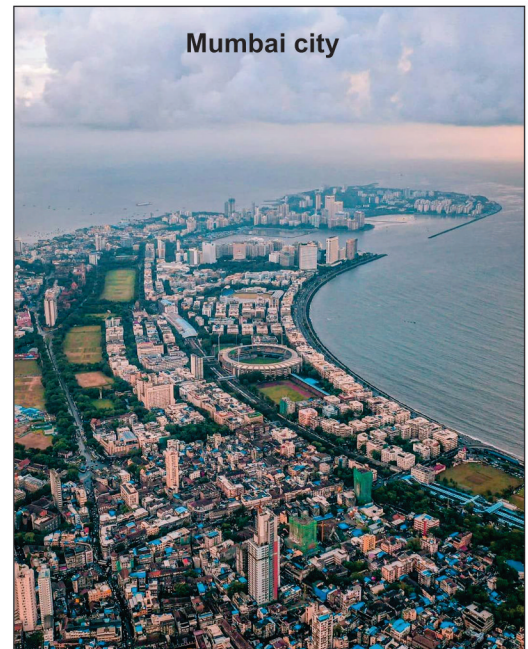
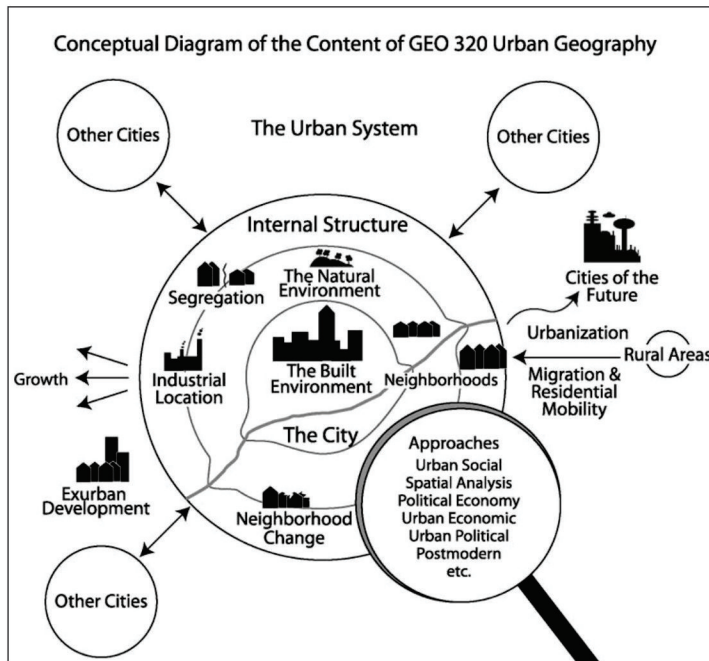
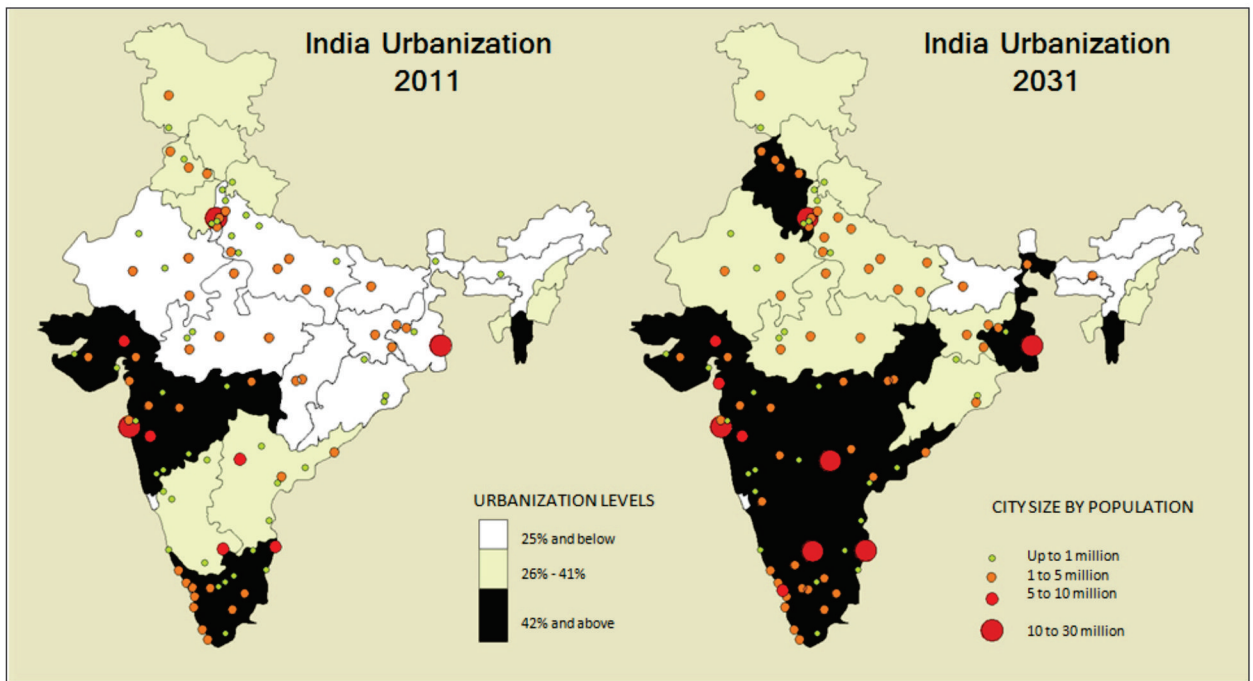


HOW MUCH WILL POPULATION INCREASE

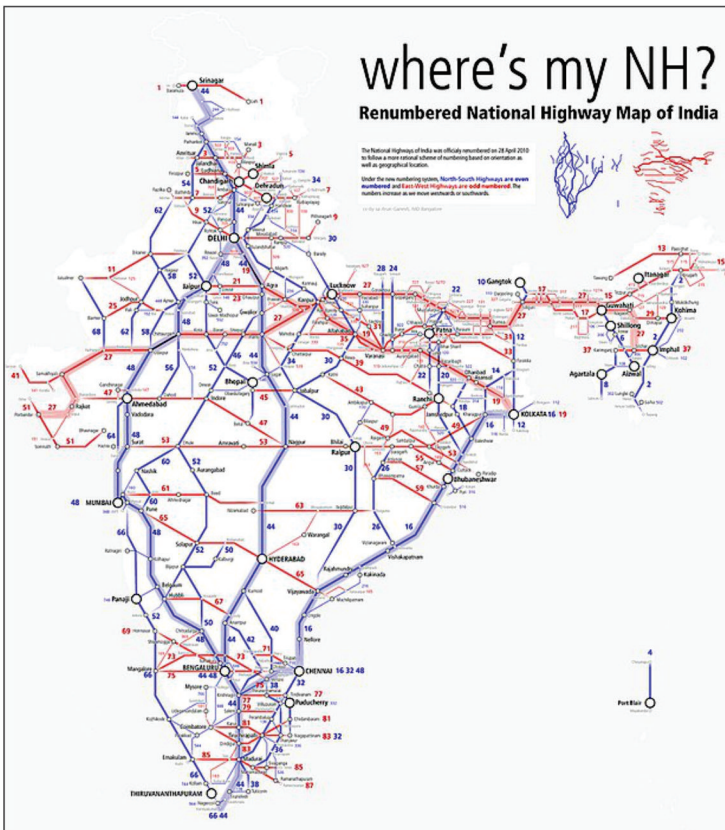
YEAR PREDICTED POPULATION



वसाहत-आधिववास



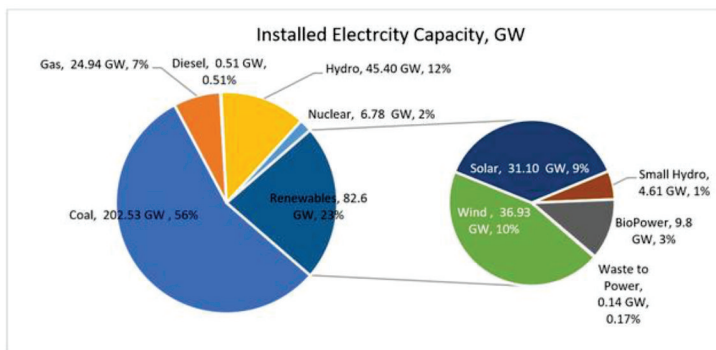
आर्थिक क्रिया



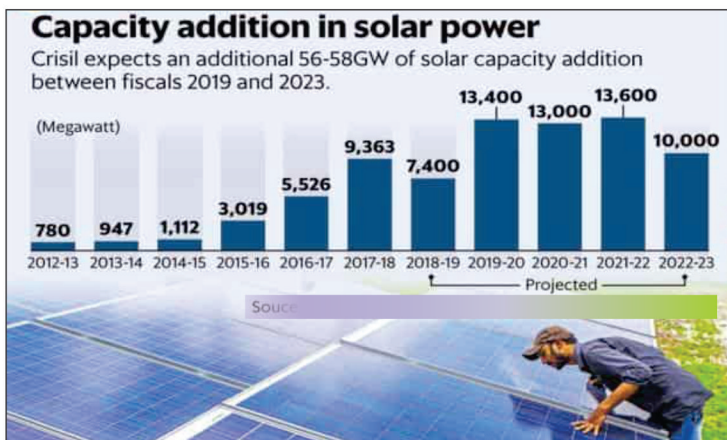
12,000 Km Of National Highways



India :Transportation and logistics sector



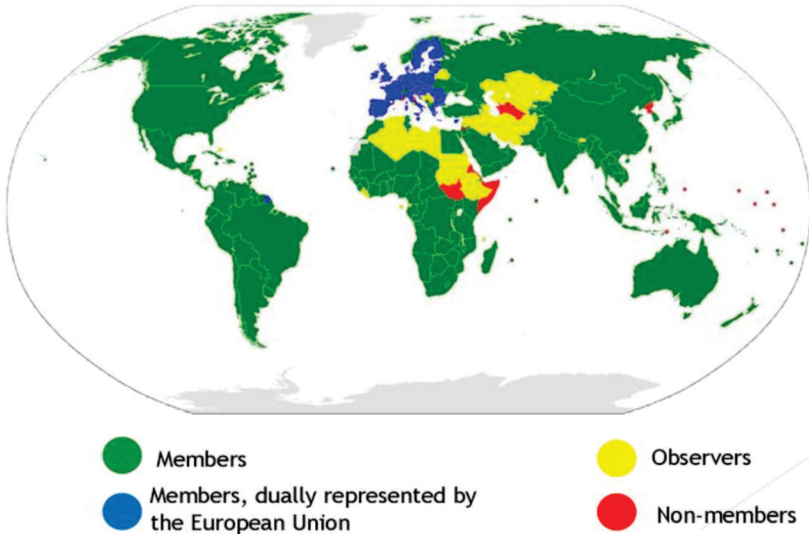
Modern Agriculture Technology in 2021



India. 18th Jan, 2021. People seen visiting Khirai flower valley in West Bengal. Khirai is a small village in West Bengal.

जागतिक व्यापार व व्यापार संघटना

Map of World Trade Organization members and observers









PDF DOWNLOAD

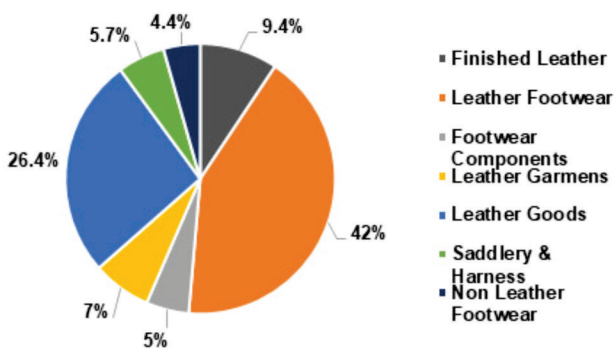
LIST AND TRICKS FOR ALL INTERNATIONAL ORGANISATIONS



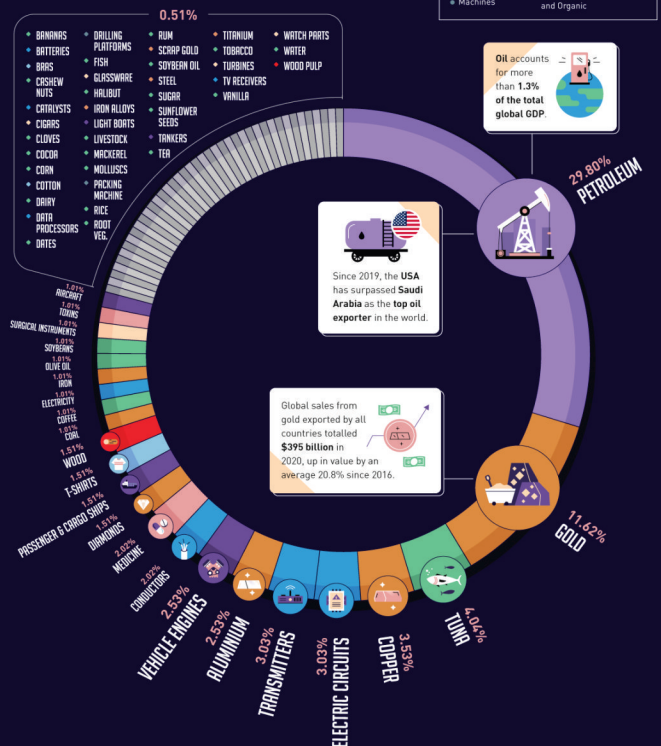




India's product-wise share of total exports (April 2021-March 2022)

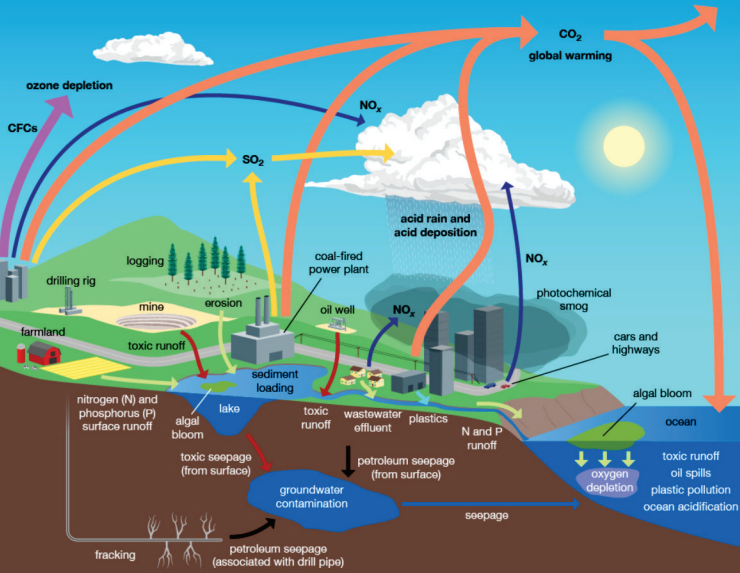


THE WORLD'S BIGGEST EXPORTS



POLLUTION

AIR, LAND, AND WATER POLLUTION



OTHER TYPES OF POLLUTION

PLASTIC

Addition of plastic waste to the landscape and waterways

CAUSE

Manufactured plastics that are not properly disposed of

ISSUES

- Plastic does not break down easily
- Additives in plastic may become endocrine disruptors
- Plastic waste flows downstream into rivers and oceans
- Sea life can ingest, choke upon, or become trapped in plastic waste
- Plastic is a source of polychlorinated biphenyls (PCBs), which are suspected carcinogens

NOISE

Unwanted or excessive sound that affects health and environmental quality

CAUSE

Machines and engines associated with industry, as well as airports and other transportation systems

ISSUES

- Physical damage to hearing organs in humans and other animals
- Noise produces increased stress levels
- Noise disrupts ecosystems by driving certain species away
- Noise alters the habits of wildlife
- Noise occurs on land (industry and transportation) and at sea (sonar, boat engine noise)

LIGHT

Unwanted or excessive light

CAUSE

Streetlights and illuminated buildings, towers, and other structures

ISSUES

- Light pollution changes nighttime visibility of natural features
- Light pollution disorients migratory animals
- Light pollution fosters bird collisions with lighted towers and buildings

THERMAL

Addition of heat to a cool environment

CAUSE

Water or air used as cooling fluids in power plants and manufacturing becomes heated

ISSUES

- Heated cooling water from power plants may be 15 °C (27 °F) hotter than lake or stream water
- Heated water increases metabolic rates in fishes
- Adding heated water to a water body reduces the amount of dissolved oxygen that the water may hold



वाहनांद्वारा हवा प्रदूषण

आम्ल पर्जन्यामुळे
फर वनांची हानी.
(पोलंड)

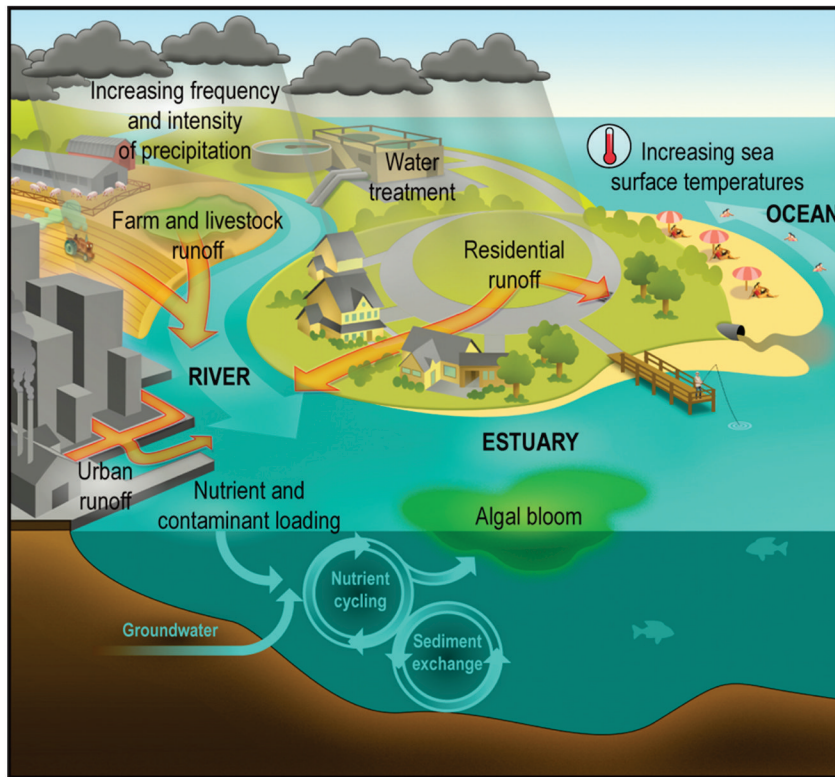


Environment and diseases caused by it



Football pitch of rainforest 'destroyed every 6 seconds

Water Quality Impacts on Human Health



Environment and diseases caused by it



TOP 10 CAUSES OF DEATH FROM THE ENVIRONMENT

8.5 million out of **13.7 million** deaths caused by the environment are due to noncommunicable diseases

